



**Evidence from a Scoping study on  
home-grown school feeding in the Pacific Islands  
Countries and Territories (PICTs)**

Ms Jessica Raneri



Australian Centre  
for Pacific Islands  
Research



Pacific  
Community  
Communauté  
du Pacifique



Australian Centre  
for International  
Agricultural Research



Pacific School  
Food Network



# Pacific School Food Network

The vision of the Pacific School Food Network (PSFN) is to **improve the health of Pacific Island children, their families, and their communities through healthier school food environments.**

*PSFN facilitates knowledge sharing and capacity building opportunities*

[www.pacificschoolfoodnetwork.org](http://www.pacificschoolfoodnetwork.org)



# Benefits of school meals programs

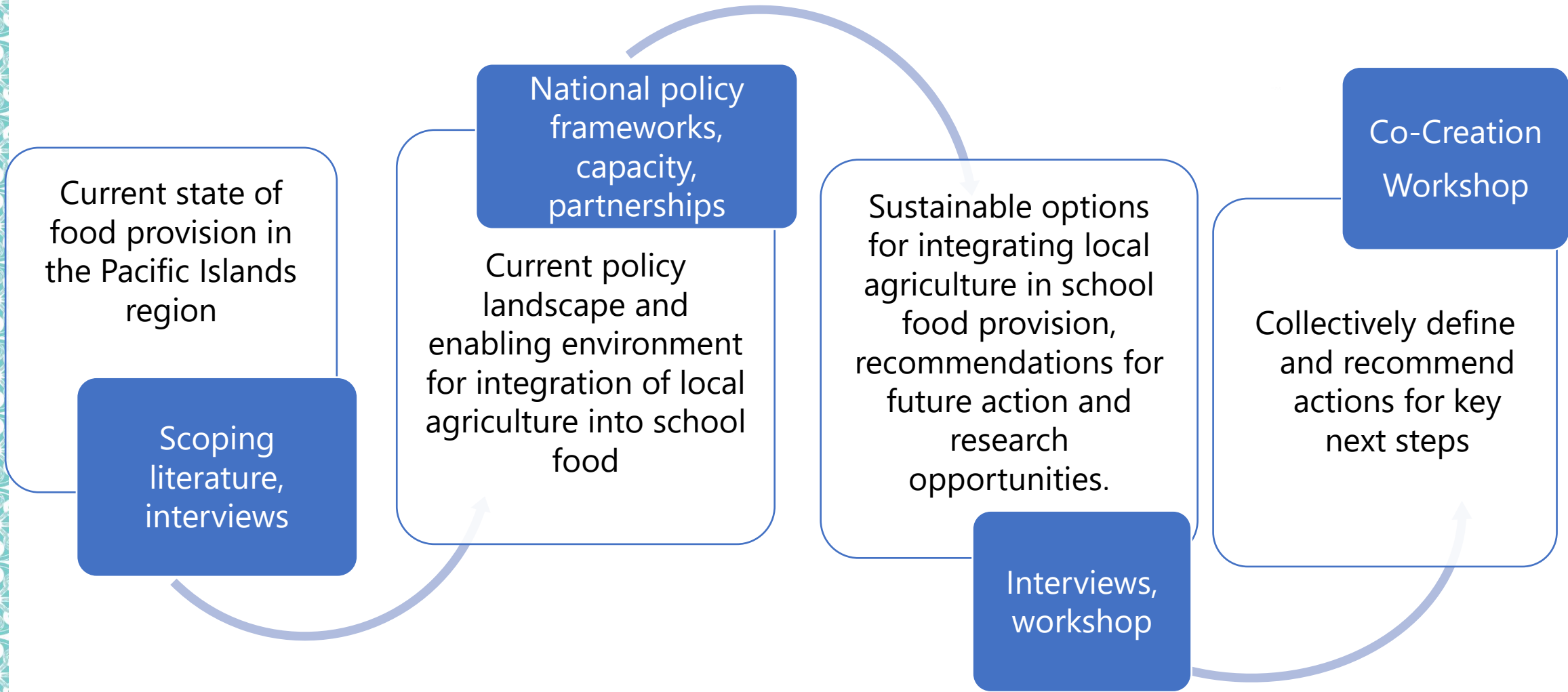
- Global recognition of multiple benefits of SMPs (nutrition, health, educational, social, economic)
- \$9USD return on every \$1USD invested
- Evidence doesn't fully capture the **wider benefits and impacts of home-grown approaches** to SMPs, which are a platform for wider food system transformation.
  - including climate resilience
- **Pacific not visible** in global best practice guidance materials





# Objectives of scoping study

1. To understand the **current state of local agriculture into school food provision** in the Pacific Islands region.
2. To understand the current **policy landscape and enabling environment** for integration of local agriculture into school food provision.
3. To identify the **best-bet sustainable options for integrating local agriculture in school food** provision and recommendations for future action.
4. To **build awareness and consensus** around the multiple benefits of integrating local agriculture in school food provision and identify partnerships for collective action on key next steps.



# Key findings



# In the literature...

- **12** referenced a school food provision activity or program.
- **7** specified details of activities on school feeding programs
- **4** school gardens
- **4** school canteens
- **3** school curricula related to school food provision



# Key Informants + Survey

- 43 Participants provided information on school food activities in 15 PICTs
- Main typologies of school food activities
  1. School feeding programs
  2. School garden activities
  3. 'Other' e.g. Nutrition education





## SCHOOL FEEDING PROGRAMS



The provision of school meals (breakfast, lunch, dinner and/or snacks) to students at school, or as take-home rations. They can vary from national programs to individual school initiatives.




## 22 SFPs identified

16 are known to be current. This included 17 day schools and 5 boarding schools

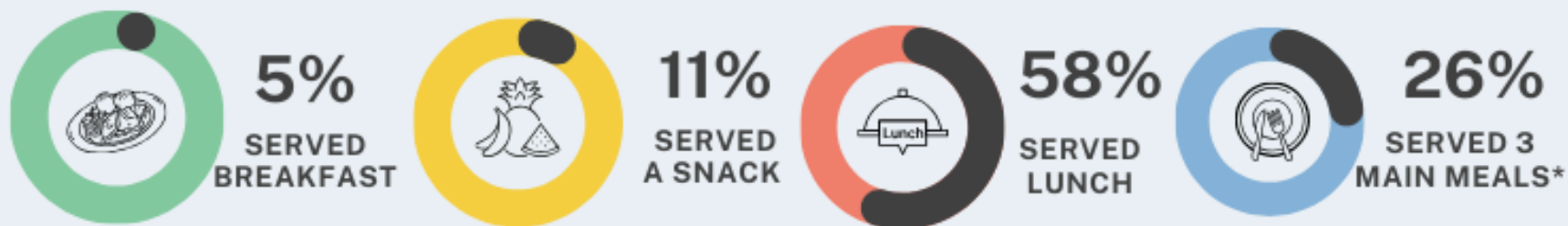
### CURRENT SCHOOL FEEDING PROGRAMS IDENTIFIED



 Federated States of Micronesia	2	 Kiribati	1	 Palau	1
 Fiji	2	 Marshall Islands	1	 Solomon Islands	1
 French Polynesia	1	 Nauru	1	 Timor Leste	1
 Guam	1	 New Caledonia	2	 Vanuatu	2

\*Federated States of Micronesia (Pohnpei), French Polynesia, Guam, Marshall Islands, Nauru, New Caledonia, Palau and Timor Leste all have national SFPs

## TYPE OF MEALS PROVIDED



\*3 main meals was provided at boarding schools only, not day schools



### INTEGRATION OF LOCAL FOODS

- 8 SFPs had a requirement to include local foods
- This varied from each school and was context dependent
- Including a range of 1 local food included at each main meal, up to 75% of foods sourced locally

### SCHOOL FEEDING POLICY

- 6 SFPs had a policy or law guiding the inclusion of local foods
- The scale of the policy varied, from regional to national



## SCHOOL GARDEN PROGRAMS

School program or activity that involves development and use of school gardens (SGP). This could be for educational purposes, income revenue or to supplement school food provision



**11 SGPs Identified**

7 are known to be ongoing

## CURRENT SCHOOL GARDEN PROGRAMS IDENTIFIED



Cook Islands

1



Fiji

2



Commonwealth of Northern Marianas

1



Federated States of Micronesia

1



Marshall Islands

1



Papua New Guinea

1



### 3 MAIN USES OF SCHOOL GARDENS

- 1 Education
- 2 Consumption\*
- 3 Generate Income

\*produce was provided to students, teachers, families to take home, used in cooking classes or to supplement the school feeding program



#### CURRICULUM

3 programs were embedded into curriculum



#### LOCAL FARMER INVOLVEMENT

5 programs involved local farmers



#### FOCUS ON LOCAL FOODS

7 programs had a focus on local foods in gardens



#### LOCAL FARMERS WERE INVOLVED IN 2 MAIN WAYS

- 1 Guest visit to schools, providing education to students
- 2 Educational school excursion to local farms

# SCHOOL FOOD PROVISION LESSONS LEARNED

## CHALLENGES

Common challenges to include local food in school food provision activities included:



- Environmental conditions
- Reliability of local food supply



- Funding and finance
- Governance and policy



- Food culture, perceptions and preferences
- Staff capacity and leadership for programs



- Food processing and storage/power facilities

## OPPORTUNITIES

Despite the challenges there are clear opportunities to move forward. These included:



- Share learnings from neighboring countries



- Utilise different gardening technologies



- Broaden local purchasing options



- Collaborate with traditional leaders, farmers and schools

- Supporting policy
- Diversify funding
- Upskill staff

# Pacific School Food Activity Database

**Pacific School Food Network**

Home About the PSFN Resources and Events Join Contact Us School Food Activity Database

## Welcome to the Pacific School Food Activity Database

This section of the PSFN website aims to provide a database of school food activities across the region.

These activities were initially identified through an ACIAR funded project (Understanding School Food Provision in the Pacific: Scoping the potential of local food systems to improve diets, nutrition and livelihoods, HORT/2021/159). More information on this project can be found [here](#).

If you have any suggestions for revisions, or new information that you would like to see added, please contact us.

[Contact us](#)

### School Food Activities in the Pacific

- Commonwealth of the Northern Mariana Islands (CNMI)**  
School food activities in the CNMI  
[Read More](#)
- Cook Islands**  
School food activities in Cook Islands  
[Read More](#)
- Federated States of Micronesia (FSM)**  
School food activities in the FSM  
[Read More](#)
- Fiji**  
School food activities in Fiji  
[Read More](#)
- French Polynesia**  
School food activities in French Polynesia  
[Read More](#)
- Guam**  
School food activities in Guam  
[Read More](#)



**Pacific School Food Network**

Home About the PSFN Resources and Events Join Contact Us School Food Activity Database

< Back

## Fiji

### School food activities in Fiji

**Cicia High School Feeding Program**  
Garden and feeding program (breakfast, lunch and dinner)

**Started:** 2006  
**Status:** Ongoing

**Reach:** One boarding and day school on Cicia Island, every day during the school year  
**School level:** Secondary

**Managed by:** Cicia Island school and 5 local villages

---

**Green Schools Program**  
Garden program

**Started:** 2020  
**Status:** Ongoing

**Reach:** Two Maritime Islands public boarding schools, Monday - Friday during the school year  
**School level:** Primary

**Program goals:**

- Improve food security for students
- Improve nutrition status
- Improving socioeconomics of schools by decreasing reliance of schools on funding for school food and community food supply
- Support connecting of the younger generation to culture and land (from spiritual and practical element)
- Integration of wider community into school garden

**Implemented by** Pacific Blue Foundation who support management with local traditional governance/leaders and school mother's group

Watch a video that outlines the Green Schools program on this page:  
<https://www.pacificschoolfoodnetwork.org/videos>

---

**Maritime Islands Boarding School Feeding Program**  
Feeding program (breakfast, lunch and dinner)

**Started:** 2020  
**Status:** Ongoing

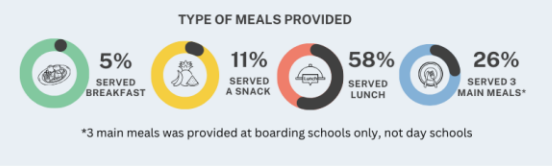
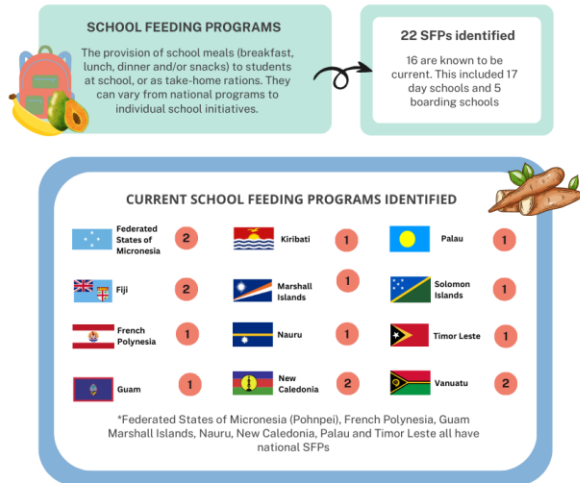
**Reach:** Public boarding school, Maritime Islands, Monday - Friday during the school year.  
**School level:** Primary

# Understanding School Food Provision in the Pacific

## REGIONAL SUMMARY

This project sought to identify current school food provision activities in Pacific Islands countries with a focus on the enabling policy environment and institutional and farmer capacity to better support the integration of local agriculture.

The key findings below were identified from scoping the literature, key informant interviews and online surveys. This factsheet provides a snapshot of information gathered, recognising that not all activities may have been able to be identified within this process.



- INTEGRATION OF LOCAL FOODS**

  - 8 SFPs had a requirement to include local foods
  - This varied from each school and was context dependent
  - Including a range of 1 local food included at each main meal, up to 75% of foods sourced locally
- SCHOOL FEEDING POLICY**

  - 6 SFPs had a policy or law guiding the inclusion of local foods
  - The scale of the policy varied, from regional to national

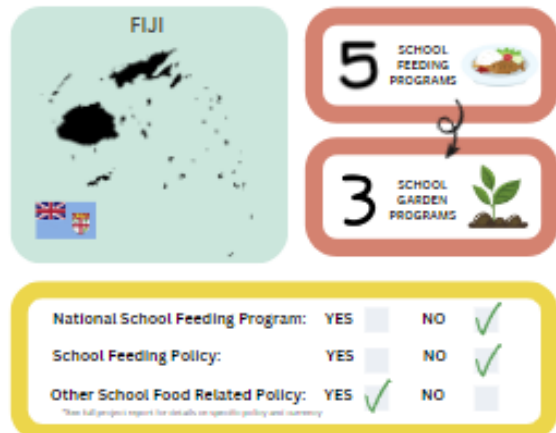


For more information on the findings from this project, please see the School Food Activity Database at [www.pacificschoolfoodnetwork.org](http://www.pacificschoolfoodnetwork.org) or scan the QR code.

## SCHOOL FOOD IN THE PACIFIC ISLANDS

# School Food Activities in Fiji

This project sought to identify current school food provision activities in Pacific Islands countries, with a focus on the enabling policy environment and institutional and farmer capacity to better support the integration of local agriculture. This factsheet provides a snapshot of key findings identified for Fiji. For more information on the findings from this project, please see the School Food Activity Database at [www.pacificschoolfoodnetwork.org](http://www.pacificschoolfoodnetwork.org) or scan the QR code.

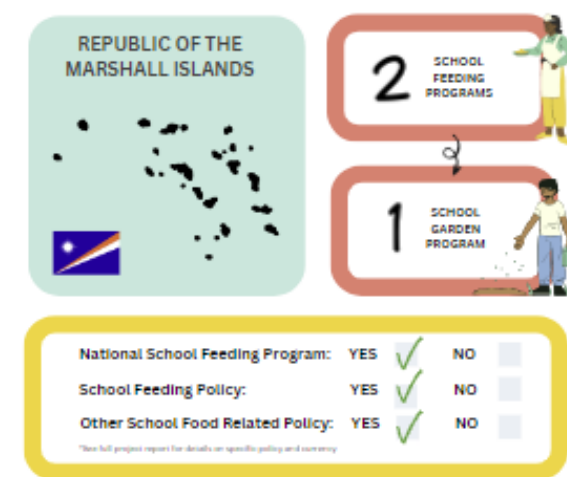


- EXAMPLES OF CURRENT ACTIVITIES IDENTIFIED**
- Cicia High School Feeding Program**  
Garden and feeding program, where produce from the garden supplements the school feeding program  
**Started:** 2006 **Status:** Ongoing  
**Meal provided:** Breakfast, lunch and dinner  
**Reach:** One boarding and day school on Cicia Island, every day during school year  
**School level:** Secondary  
**Requirement to include local foods:** YES, Under traditional governance system  
**Managed by:** Cicia Island school and 3 local villages
- Maritime Islands Boarding School Feeding Program**  
**Started:** 2020 **Status:** Ongoing  
**Meal Provided:** Breakfast, Lunch and dinner  
**Reach:** Three boarding schools, Maritime Islands, Monday - Friday during school year  
**School level:** Primary  
**Requirement to include local foods:** YES, Under traditional governance system
- Green Schools Program**  
Garden program provides produce to supplement the Maritime Islands Boarding schools (above)  
**Started:** 2020 **Status:** Ongoing  
**Reach:** Three Maritime Islands public boarding schools, Monday - Friday during school year  
**School level:** Primary  
**Stakeholders engaged include:** Pacific Blue Foundation who support management with local traditional governance/leaders and school mother's group

## SCHOOL FOOD IN THE PACIFIC ISLANDS

# School Food Activities in Republic of the Marshall Islands

This project sought to identify current school food provision activities in Pacific Islands countries, with a focus on the enabling policy environment and institutional and farmer capacity to better support the integration of local agriculture. This factsheet provides a snapshot of key findings identified for New Caledonia. For more information on the findings from this project, please see the School Food Activity Database at [www.pacificschoolfoodnetwork.org](http://www.pacificschoolfoodnetwork.org) or scan the QR code.



- EXAMPLES OF CURRENT ACTIVITIES IDENTIFIED**
- School Lunch Program**  
**Started:** Unsure **Status:** Ongoing  
**Meal Provided:** Lunch  
**Reach:** National school feeding program in all public and private day schools  
**School level:** Primary and secondary school  
**Requirement to include local foods:** YES, inclusion of at least 3 local food per meal  
**Stakeholders engaged include:** Ministry of Education manages and coordinates program. Multiple other entities are also involved including Tahaan technical mission, Technical assistance & planning: MoE, Cervus Back Wellness Centre
- School Learning Garden Program**  
**Started:** 2014 **Status:** Ongoing  
**Reach:** Local, plans for national, Day schools  
**School level:** Primary and secondary school  
**Garden Use:**
- Education (embedded into the curriculum and used to teach language, arts, culture, science, numeracy, agriculture, food security)
  - Consumption (produce sent home with students and teachers, long term plan to supplement school feeding program)
  - Cooking (cooking contest with students & nutrition club and cooking demonstration as a part of teacher training)
- Stakeholders engaged include:** Ministry of Agriculture, FAO, Ministry of Natural Resources, stakeholders from Ku Mameki Oia Farm and Education Mameki Oia Farm and Education in Hawaii

# Policy deep-dive

- School feeding policies were identified for 8 school feeding programs
  - (FSM, Fiji, French Polynesia, New Caledonia, RMI, Timor-Leste)
- Other countries mainly addressed nutrition in school-aged children, but
  - **did not explicitly provide strategies, goals, or recommendations to implement school food provision.**
- The need for school food-related policy was a focus of discussion in many key informant interviews
  - **Some respondents indicated a lack of supporting policy as a problem/inhibitor.**



# Regional Co-creation Best Fit Models

- Predominately, or **local foods** was seen as ideal,
  - **but not realistic now**, or for new programs.
- **A hybrid model (Imported + local)**
  - more realistic & likely to be successful
  - aim of moving towards integration of more local food over time.
- Multisector engagement
- Contextualised models that are community led
- A systems focus



# Learnings and limitations

- Complexity in school food activities exceeded our expectations → required more time and more triangulation
- Virtual interactions
  - Unable to engage with some stakeholders (especially farmers), even when aware of activities.
- Challenging to ensure complete information for each school feeding activity has been documented (people tend to know about their work, but not that of others).
- Narrowing to sub-set of countries for the 'deep-dive'. Stakeholders indicated there was a lot of interest in this project, and were interested in being involved, even if there were not a lot of activities underway in their country.



# Thank you



## Pacific School Food Network

Ms Jessica Raneri, [jessicaraneri@gmail.com](mailto:jessicaraneri@gmail.com)

[www.pacificschoolfoodnetwork.org](http://www.pacificschoolfoodnetwork.org)



Australian Centre  
for Pacific Islands  
Research



Pacific  
Community  
Communauté  
du Pacifique



Australian Centre  
for International  
Agricultural Research



Pacific School  
Food Network



# Pacific School Food Network



The Pacific School Food Network is supported by the Australian Government and implemented by the University of the Sunshine Coast



Australian Centre  
For Pacific Islands  
Research

# Acknowledgements

We would like to gratefully acknowledge the support of the **Australian Centre for International Agricultural Research** (ACIAR) for funding this work, and Irene Kernot our program manager.

Project team:

**Dr Sarah Burkhart, Dr Danny Hunter, Ms Bridget Horsey, Ms Jenna Perry, Ms Jessica Raneri, Ms Mikayla Hyland-Wood, Dr Stephanie O'Connor, Ms Alisi Tuqa, and Ms Elodie Casey.**

